

DIRECTIONS FOR INSTALLATION AND USE OF VISUAL D.A.I.



(pic. 1)

Installation

Download and decompress the COMPLETE SETUP 4.2.0 (file VISUALDAI_4_SETUP.ZIP) in a temporary temporary and run the setup.

The procedure will automatically install VISUAL D.A.I. in the **C:\Programmi\VisualDAI** directory

If you wish to install it in another directory, modify the path. Download and decompress the updating file UPDATE SW straight in the same directory where you installed the program. Download also the updating file ABBEY.ZIP but store it for now.

Run the program from the application bar or create a shortcut on your desktop with the proper procedure (right-button click on the desktop, link to, select the path C:\Programmi\VisualDAI\VisualDAI.exe and push OK). A screen as shown in the pic. 1 will appear. After first run the program requests the User's info: a box as shown in the pic. 2 will appear. Insert your data in it as follows:

User Data

CALLSIGN OM/YL/SWL

Nome

Cognome

Città

Indirizzo

Nazione

ZipCode

Locator

Sezione Email

Address

SMTP

Password

Language

CallBook.bok

OK

(pic. 2)

Personal data

Your personal data, you can recall and modify them with USER key, must be inserted in this form. Fill the Email section with your e-mail address, the SMTP (outgoing mail server), if you does not know it, look at Outlook Express (Menu Tools > Account > Properties > Server), and your email password. This form allows to choose your preferred language.

The last field is for the Callbook. The software implements the seeking on IK1MTT's Callbook. To use it, copy the file ITALY.BOK (Italian callbook) or WORLD.BOK (world callbook) in the sub-directory Callbook. The file ITALY.BOK is downloadable from the web site www.qsl.net/in3vrr , and the file WORLD.BOK is available in the Worldcall CD (you can purchase it from the author Marco IK1MTT, mail: m.marconetto@tiscali.it). We advice to use the option WORLD.BOK only if your computer is very fast otherwise the program will become very slow. The seeking on the callbook is optional and actually it is useful mostly for the expeditioniers; hunters better not use this option, if an abnormal slowdown of the computer will be noticed.

Numero di Referenze DAI nel DataBase : 7752

☒ Ricerca DAI per Referenza LB - Lombardia Records : 1087
☐ Ricerca DAI per Nome Abbazia
☐ Ricerca DAI per Città dell'Abbazia LB0001 << CERCA

DAI Ref.	Abbay	Century	Location	City	Prov.	Wais
LB0001	ABBZIA DEI SS.PIETRO E PAOLO	XI-XII		ABBADIA CERRETO	LO	BL18
LB0002	CHIESA DI SAN GIORGIO	XIII		ABBADIA LARIANA	LC	AR17
LB0003	ORATORIO DI SAN MARTINO	XIII		ABBADIA LARIANA	LC	AR17
LB0004	CONVENTO DELL'ANNUNZIATA	XV		ABBIATEGRASSO	MI	BK14
LB0005	CHIESA DI SANTA MARIA NUOVA	XIV		ABBIATEGRASSO	MI	BK14
LB0006	CHIESA DEI SS COSMA E DAMIANO	XV		ACQUANEGRA CREMONESE	CR	BL20
LB0007	CHIESA DI SAN TOMMASO AD ACQUANEGRA SUL CHIESE	XI		ACQUANEGRA SUL CHIESE	MN	BM23
LB0008	CHIESA MADRE DI SAN MARTINO VESCOVO	XV		ADRARA SAN MARTINO	BG	AS20
LB0009	CHIESA DI SANTA MARIA IN FAVENTO	XIII		ADRO	BS	BJ20
LB0010	CHIESA DI SANTA MARIA ASSUNTA	XIV		ADRO	BS	BJ20
LB0011	CHIESA DI SAN GIOVANNI BATTISTA	XV		ALAGNA	PV	BM14
LB0012	CHIESA PARROCCHIALE SS.CORNELIO E CIPRIANO	XII		ALBANO S.ALESSANDRO	BG	AS19
LB0013	CHIESA DI SAN GIORGIO	XIII		ALBANO S.ALESSANDRO	BG	AS19
LB0014	CHIESA DI SAN ROCCO E SAN SEBASTIANO	XV		ALBAREDO PER SAN MARCO	SO	AQ18
LB0015	CHIESA DI SAN GIOVANNI EVANGELISTA	XIII		ALBIATE	MB	BJ16
LB0016	CHIESA DI SAN BARTOLOMEO	XIV		ALBINO	BG	AS19

(pic. 3)

Search Key

The key **Search** allows you to seek the database of the DAI references (pic. 3) either through the DAI code, or through the reference name, or through the town name. Insert the data in the proper box and strike SEARCH. if the program finds more than one row, with the FORWARD key you can move to next found data.

The right menu allows you to see the list of the references sorted by Region, anyway the seeking is done on the whole database.

CALL	DAI	Date UTC	Band	Mode	Qsl S	Qsl R

(pic. 4)

Section and key "Expeditioner"

This section is for the Activators. The key opens a box to manage your own activations (pic.4). The upper part of the box contains the data of the previous activations done. You can manage different activations made with different callsigns (e.g. special event callsigns, clubstation callsigns, etc.), open the archived logs and erase them. The lower section is to manage the present activation: in the box ACTIVATE NEW DAI REFERENCE you have to put the DAI code of the Reference you are going to activate (as XX0000) and in the box CALL EXPEDITIONER the activator's callsign. Press OPEN NEW LOG. The program asks to confirm, after that an electronic logsheet will open, in which you will have to select MODE and BAND used. DATE and TIME can be taken automatically from the internal clock or manually inserted on selecting either the key AUTO DATA or MANUAL DATA, but anyway you can even modify later. The upper keys allow to show and print your log as plain text (LOG PRINT) and to make an ADIF file (SAVE ADIF) to send to the DAI Manager, but also for a further import to your based station logsheet. The key IMPORT FROM ADIF allows to import in Visual DAI an ADIF file of an activation made with another logging software. To save the QSO you have either to press the key SAVE or the combination CTRL+S.

CALL	Date UTC	Band	Mode	Rst S	Rst R	Manager	Qsl S	Qsl R	D.A.I.	Name	Oth
IX1FCV	20/02/2008 13.15.00	40	SSB	59	59		N	N	AE0001	CHIESA PARROCCHIA	ANTEY-SAINT-ANDR
I1ASU	17/02/2008 10.00.00	40	SSB	59	59		Y	Y	LG0139	SANTUARIO DI NOS	ISOLABONA [IM]
I1ASU	17/02/2008 8.00.00	40	SSB	59	59		Y	Y	LG0028	CHIESA DELLA PURI	APRICALE [IM]
I28EDG	17/02/2008 8.00.00	40	SSB	59	59		Y	Y	CP0528	CHIESA PARROCCHIA	VIETRI SUL MARE [S]
I3THJ	17/02/2008 8.00.00	40	SSB	59	59		Y	Y	VN0547	CAMPANILE DELLA E	VENEZIA [VE]
I1EEW	13/02/2008 10.00.00	40	SSB	59	59		Y	Y	LG0329	CHIESA DELLA MAD	BAIARDO [IM]
I1EEW	13/02/2008 8.00.00	40	SSB	59	59		Y	Y	LG0039	RUDERI DELLA CHIE	BAIARDO [IM]
I1EEW	09/02/2008 8.00.00	40	SSB	59	59		Y	Y	LG0328	CHIESA DI SANT'AN	CERIANA [IM]
I22GTO	09/02/2008 8.00.00	40	SSB	59	59		Y	Y	LB1057	CHIESA DEI SANTI	VGORLA MAGGIORE [I]
I1ASU	03/02/2008 8.00.00	40	SSB	59	59		Y	Y	LG0138	CHIESA PARROCCH	ISOLABONA [IM]
IK8WEJ	02/02/2008 10.00.00	40	SSB	59	59		Y	Y	BC0088	CHIESA DI SAN BIA	GRAPOLLA [PZ]

(pic. 5)

Secton and "Hunter" key

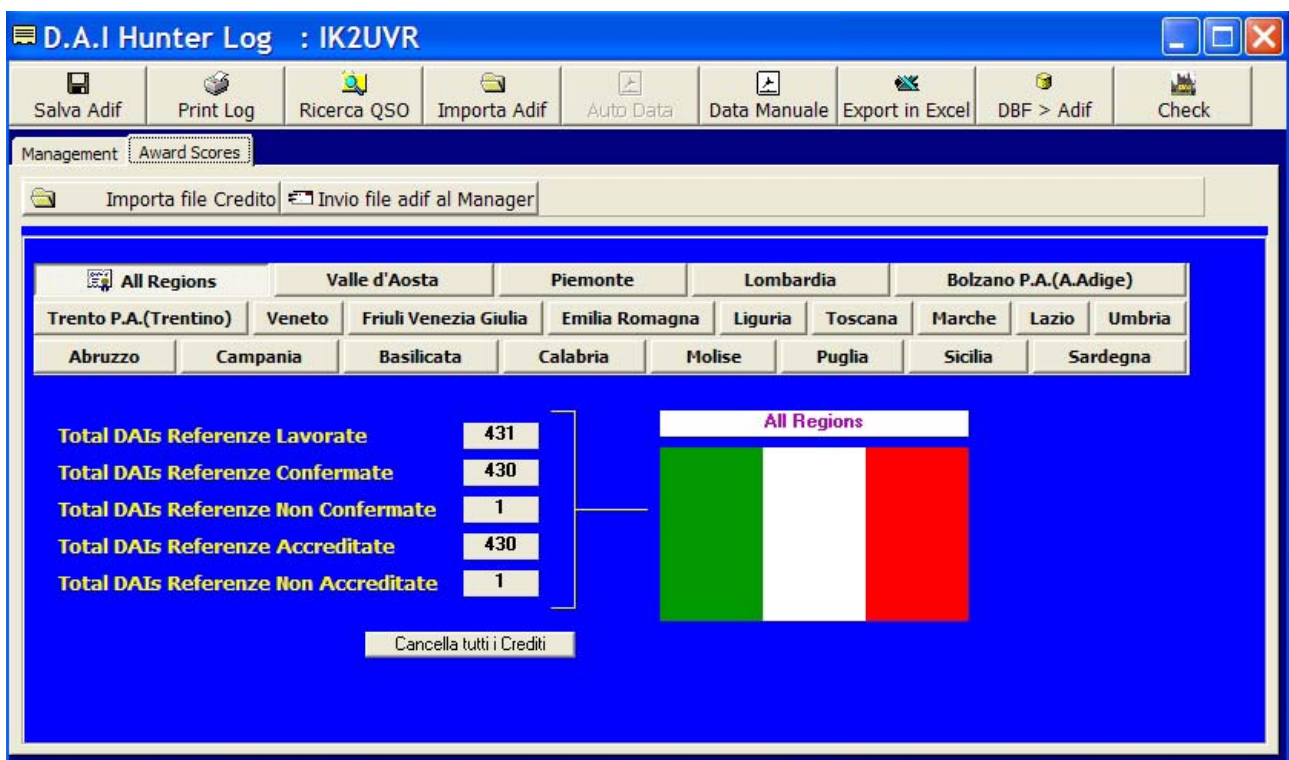
This key allows to manage the logsheet for Hunters.

Subsection MANAGEMENT (pic.5)

The Subsection MANAGEMENT is to insert the data of the QSO. Insert the DAI Code (2 letters and 4 numbers e.g. AE0001): the box NAME OF THE ABBEY will show the name of the Reference and the box ABBEY PLACE the town. In this case also you can select date and time either automatically with the key AUTO DATA or manually with the key MANUAL DATA. In the box CALL the activator's callsign (if the Callbook is installed, the activator's name will appear an a box). The box QSL_S allows you to decide what to do with the QSL card: N means QSL card non yet sent (this QSO will be inserted in the print buffer). Y means QSL card sent. X means I don't send the QSL card (for activators that you have contacted in the past and don't want more QSL cards from you). After the printing of the labels all "N" will be changed to "Y". In the field QSL_R you have to insert "N" if you did not receive yet the QSL card from the activator and "Y" if you have that QSL card in your hands. The key SAVE ADIF saves the log in ADIF format and is used to fit the file either to send to the Manager for credits, or to import your log into another logbook program or to create a Backup of your log. The key PRINT LOG allows to show/print your log in a plain text format; QSO SEARCH allows you to seek a QSO from either the DAI Code or the Espeditioner's Callsign; IMPORT ADIF is to import a log in ADIF format. EXPORT TO EXCEL is a tool to export the log in Excel format, only for check by the Hunter. To the Manager you must send ONLY the ADIF file, and not the Excel one. The QSO's can be sorted in several ways. The little magenta C key ha sto be used very carefully, a sit erase the log. You can use it as exemple in case of a trouble to recover your log from a previous backup. The key DBF > ADIF converts to ADIF a log made with other softwares that generate a DBF

file: striking this key a box opens: you have to tell to the program which fields correspond to Visual DAI ones, e.g. the field QTH of Visual DAI could be called CITY or PLACE in another logbook software, moreover the DAI code must be inserted in 6 digits format (2 letters and 4 numbers with neither spaces nor slashes nor separation keys, e.g. AE0001) in a proper field, as example the field NOTE of Easy Log or Comment of Log VRR). After the coupling of the fields, striking the key CONVERT > ADIF the program will perform the conversion to ADIF.

The CHECK key can be very useful and allows to check your log according with the last database downloaded. You can log a QSO from a new assigned reference, not yet listed in your database: you can force it from the DAI Code field, and leave blank the rest of the fields. Once you will make next database update, hit the CHECK key and your blank field will be automatically filled with the reference info: name and place.



(pic. 6)

Subsection AWARD SCORES (pic. 6)

In the Subsection AWARD SCORES you can either show your global situation or show it by Region (worked, confirmed, not confirmed, credited, and not credited references), or to manage the endorsements: the key SEND ADIF FILE TO MANAGER must be used after to have made the ADIF file through the SAVE ADIF FILE previously described. Hitting this key a box will appear: you can select the proper file to be sent, whose filename will be: YOURCALL_DAIH.ADI. Select it and through the OK key the software will send it to the Manager. Once the file has been processed by the Manager, he will send you two files, whose names will be ACCR_YOURCALL.TXT and ERR_YOURCALL.TXT. The first file contains your credits and must be copied into the CREDITFILES subdirectory. The second one allows you to check the uncredited references. You can find: REFERENCE NOT YET ACTIVATED:

probably you inserted a wrong DAI Code; QSO NOT IN LOG!: that seems to be quite comprehensible. To process the credit file press the key IMPORT CREDIT FILE: a box will open into the CREDITFILES sub directory. Select the proper file and press OK: the program will validate your credits and will update your score. We advise, before to process this file, to erase all cùprevious credits with the key ERASE ALL CREDITS. Don't worry, you won't lose your credits:the credit files is always cumulative. It contains all your credits and not just the last ones. If you erase your credits before to process the file you can avoid some problems about the score, that could come out, mostly if you used to work with previous versions of the software.

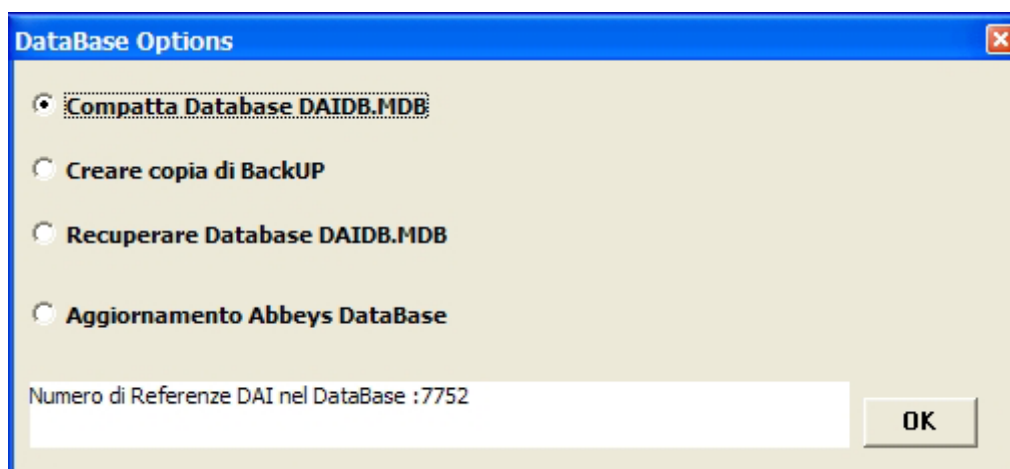
Rules key

It shows the Rules in all languages implemented to present time.

Anyway those files could be unupdated, so we advise you to refer to the officia rules as shown in the web site www.aribusto.it and completed with FAQ in the proper page, that have force of rules.

Forms key

It allows to open the forms. Anyway they are not needed if you use this program.

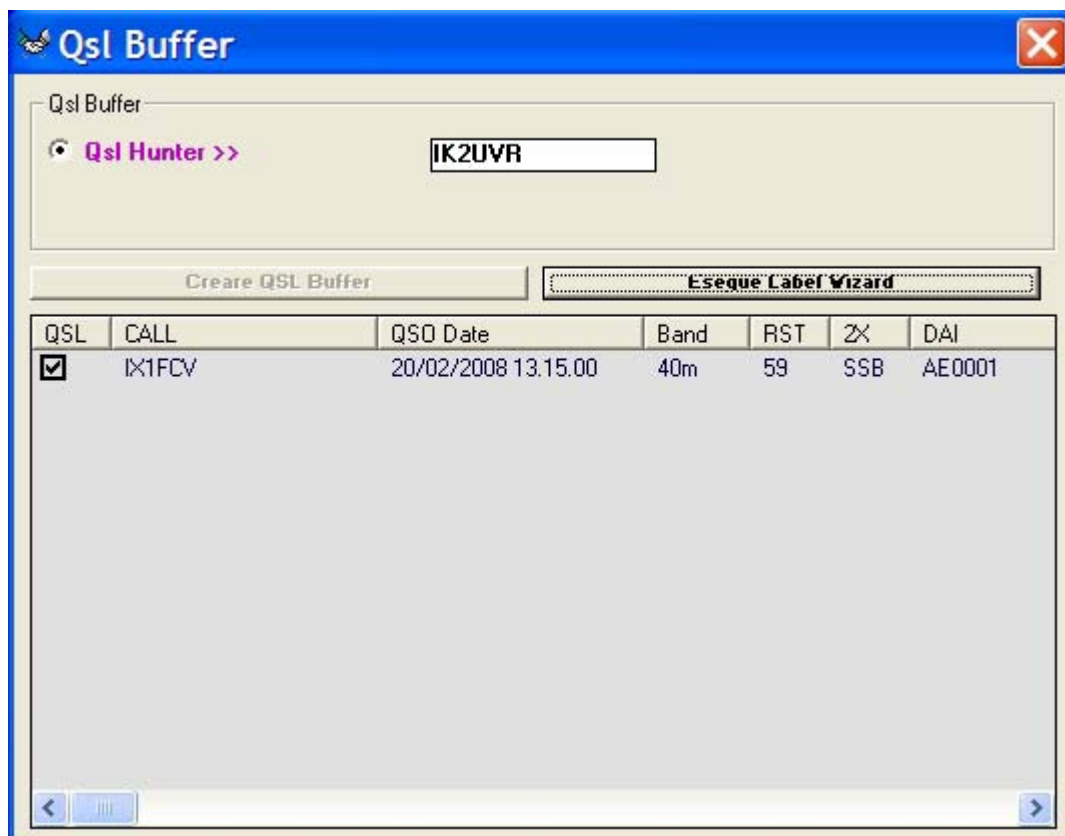


(pic. 7)

DATABASE key

Striking this key a box with several functions will open (pic. 7). They are: COMPACT DATABASE, MAKE A BACKUP COPY, RECOVER DATABASE DAIDB.MDB and UPDATE ABBEYS DATABASE.

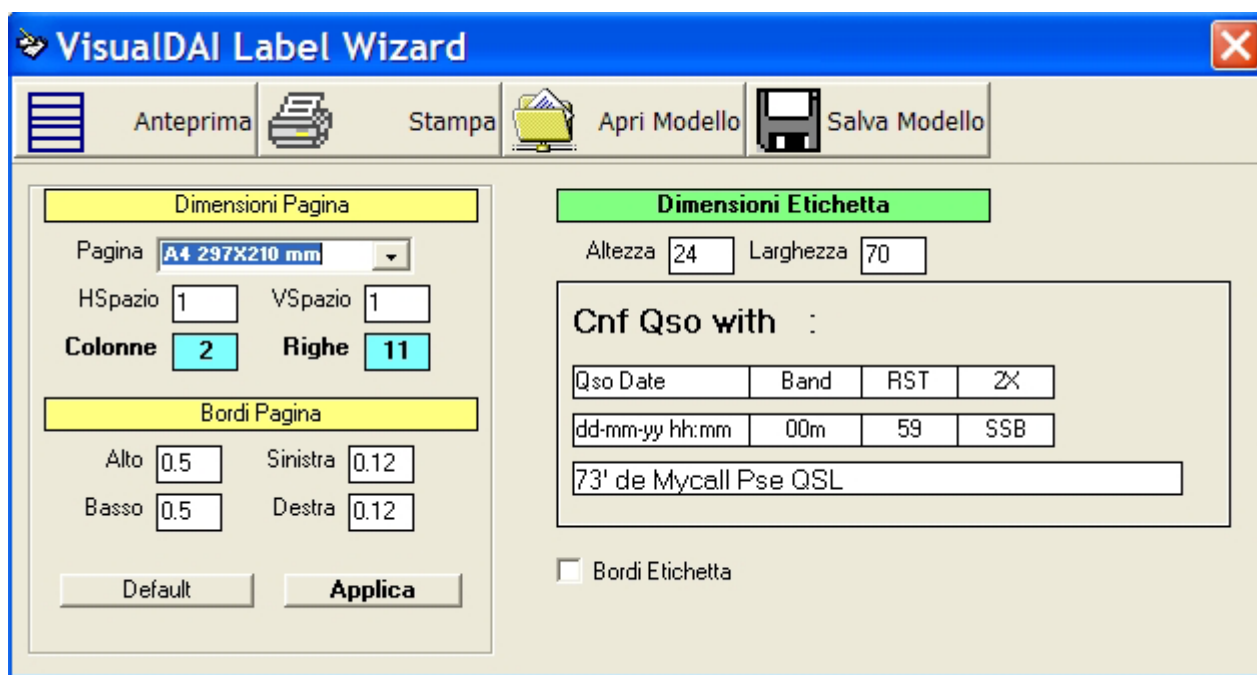
The last one allows you to keep your database updated: every time a one or more DAI reference is added or modified, a new release of this file is stored in the web site. The procedure downloads and decompress the ZIP file. At the end of the task, the total number of the reference and the number of added references will appear in the lower box. To get it working you must be connected to the web and have filled the proper fields in the USER Section. If the file is downloaded but the program is not able to make the update check the presence of the library file called ZLIB.DLL in the same directory where your software is: if you won't find it you can download it from www.aribusto.it



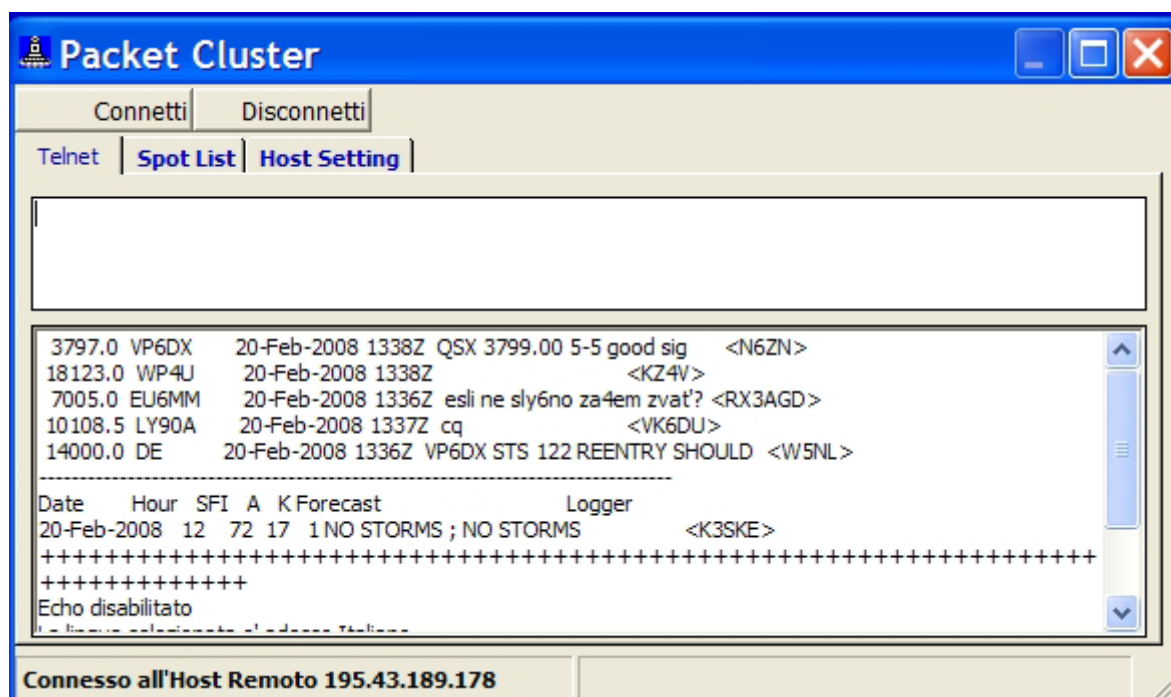
(pic. 8)

QSL Wizard key

It allows to fit and print the labels for the QSL cards. All the registered QSO's whose QSL_S field is set to "N" are inserted in the label printing buffer. First of all select either QSL HUNTER or QSL EXPEDITIONER then press the key CREATE QSL BUFFER (pic. 8). In the box all QSO copied in the buffer will be shown. With the key MAKE LABEL WIZARD the software prepares the labels (pic. 9). You can set the label preferences: page size (at the momento just A4), horizontal and vertical spaces, columns and rows. With PAGE EDGES you can set the size of the edges and with LABEL SIZE the size of your labels. You can save your changes with the key SAVE TEMPLATE and you can recall your stored labels with OPEN TEMPLATE key. The PREVIEW key shows the print preview and the PRINT key proceed to the printing of the labels. After the printing the program asks if you want to set to "Y" the boxes QSL_S to indicate the QSL card has been sent.



(pic. 9)



(pic. 10)

TELNET CLUSTER key

It opens a Telnet Cluster window. Of course to get it working you must be connected to the web.

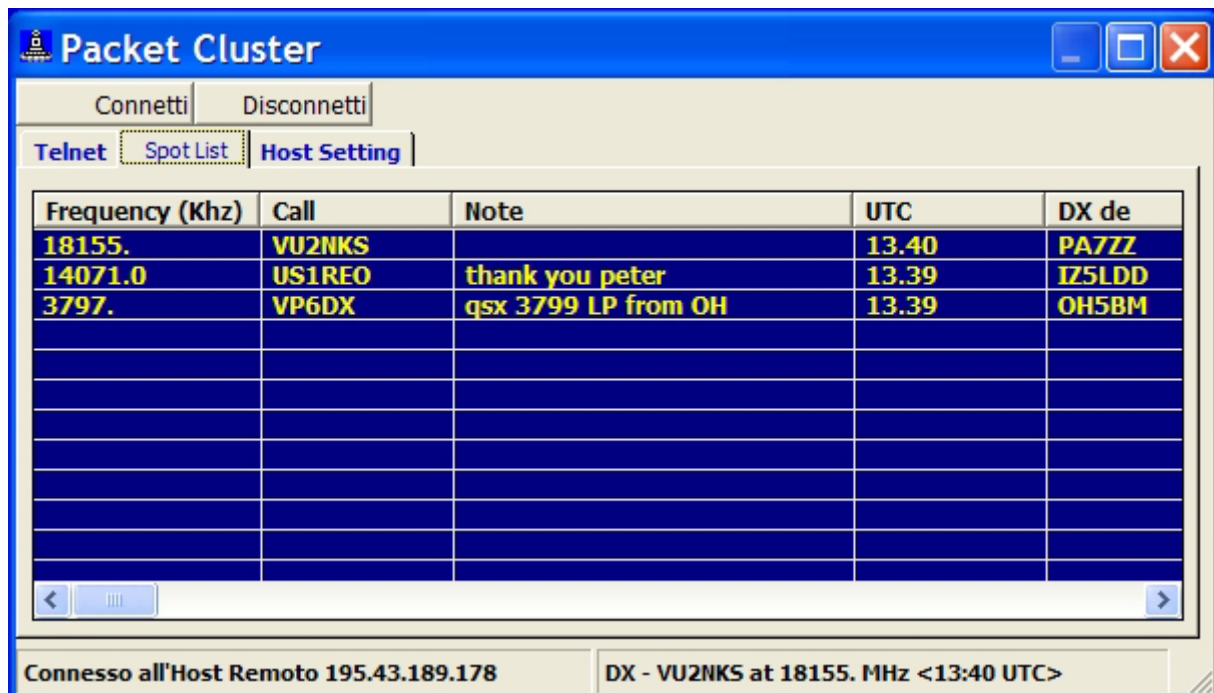
With TELNET (pic. 10) a double window opens: the upper section is for commands, the lower section is the traffic window.

With HOST SETTINGS (pic. 11) you can choose the on-line Telnet Cluster you want to be connected to (some of them are already listed) and with SPOT FILTERS you can select the bands you want to check.

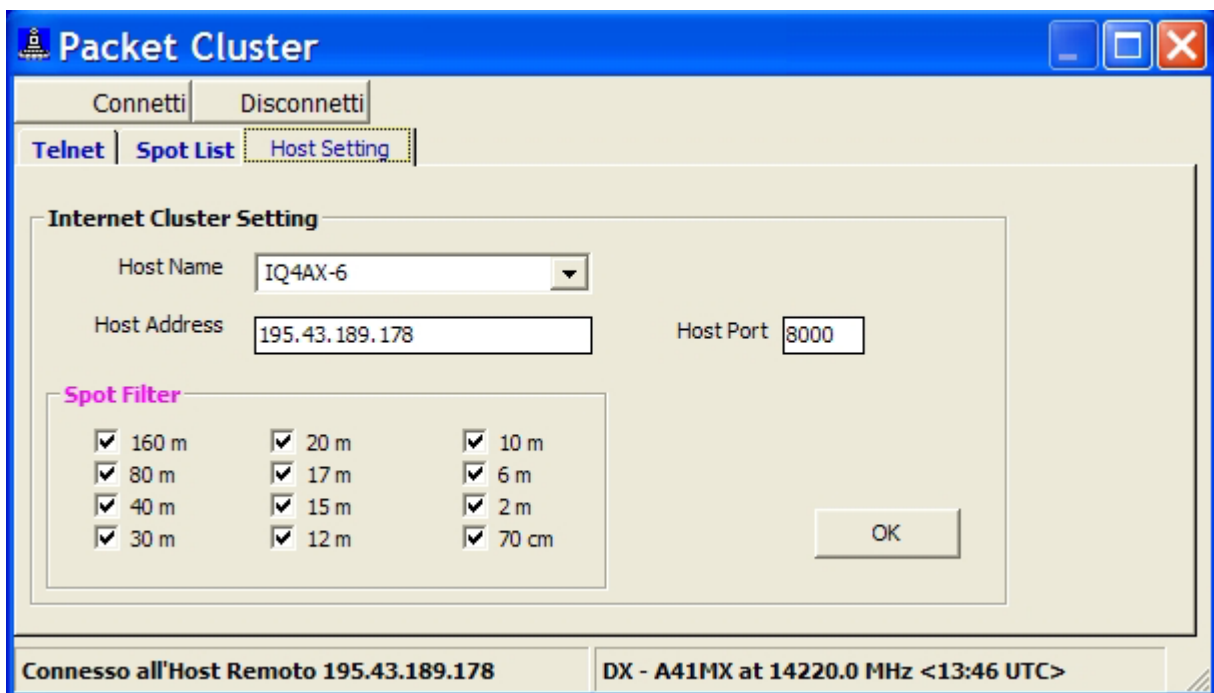
SPOT LIST (pic. 12) opens the output window with all data received.

The keys CONNECT and DISCONNECT are obviously to get the connection and to disconnect from the Telnet. You don't need to send your callsign, as it will

be automatically transmitted: striking CONNECT you will be connected in a few seconds.



(pic. 11)



(pic. 12)

VISUAL DAI UPDATINGS:

The database and software updatings will be available for download from the web site www.aribusto.it

The database is automatically updatable. If you are not connected to the web please follow these directions:

The database filename is always ABBEYS.ZIP and it has to be decompressed in the subdirectory DATAFILES, overwriting the existing file (answer YES to the question OVERWRITE?) The software updating filename is as example VISUALDAI_5_2_0.ZIP, and each new version is comprehensive of all previous changes, so that it is not necessary to make all updatings in its sequence. Just decompress the EXE file stored in the ZIP archive, its name is always VISUALDAI.EXE, in the directory where the software has been installed overwriting the previous file. For safety we advice to make a copy of the old file, just in case the new one does not work properly.

Test the program and send your suggestions to info@aribusto.it

Please remember that the program, written by Giorgio IK2VIW, is experimental, so that some bugs can be present.

DISCLAIMER

The program is free and can be freely shared on the condition it won't have to be modified in any part without the permission of the author.

The software is distributed as it is, without any guarantee of working. The author anyway feels himself not responsible for malfunctions, damages or lost of data that could happen because of the use of this software.

© Giorgio Crosta, IK2VIW, 2007-2008